

MACAU TOWER  
CONVENTION & ENTERTAINMENT CENTRE  
FLOOR PLAN

澳門旅遊塔會展娛樂中心  
展覽及宴會廳平面圖

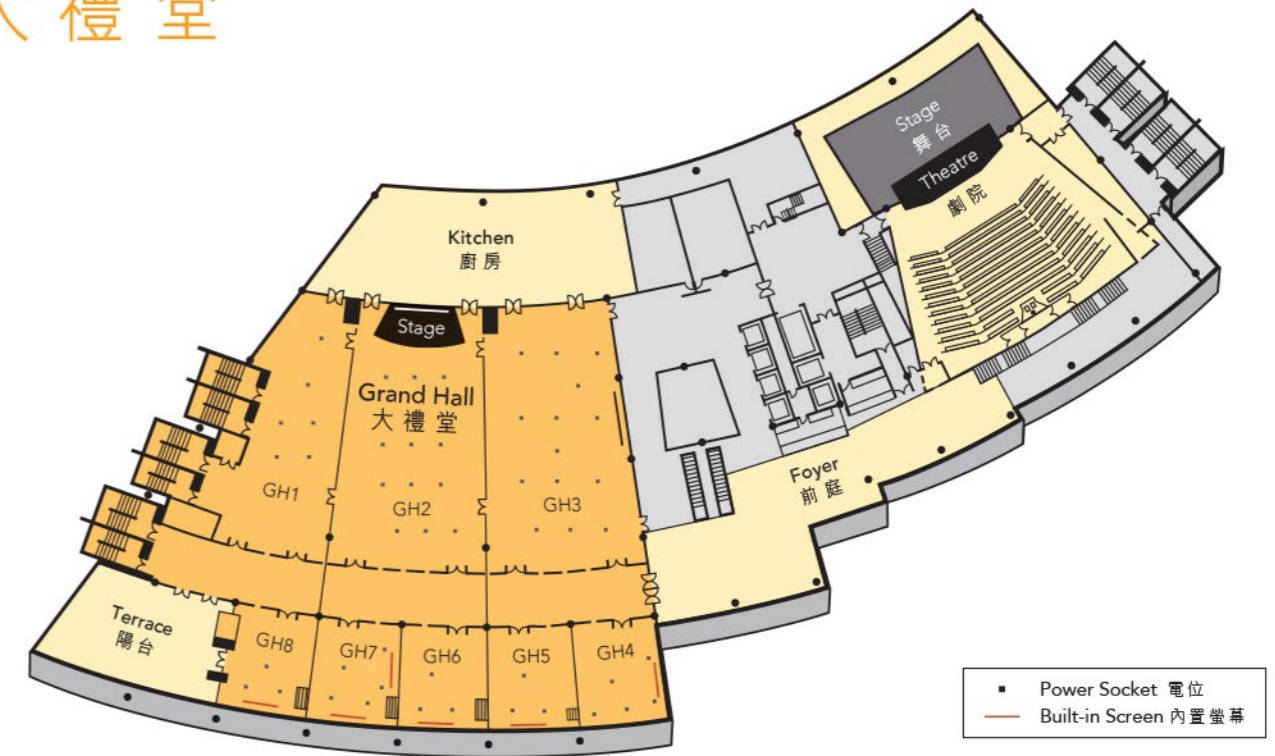


[www.macautower.com.mo](http://www.macautower.com.mo)

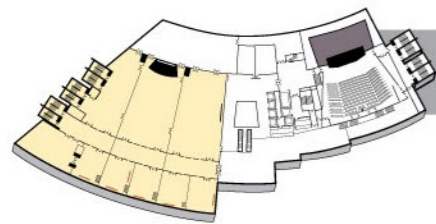


# Level 4

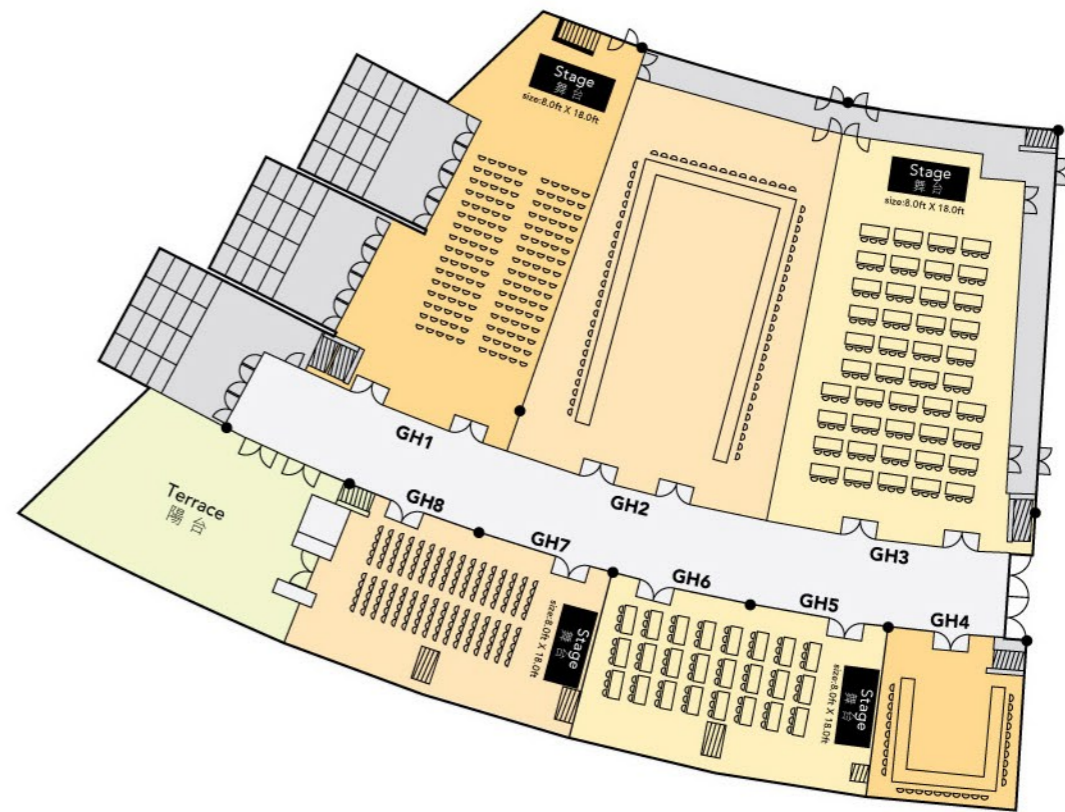
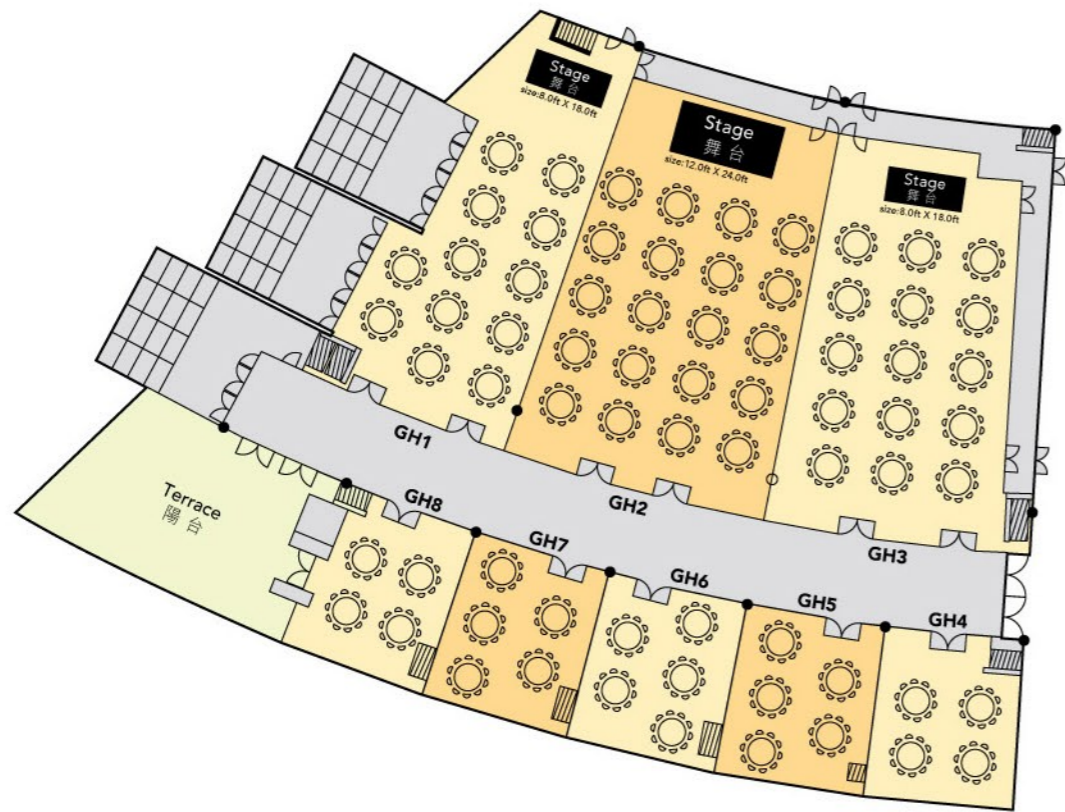
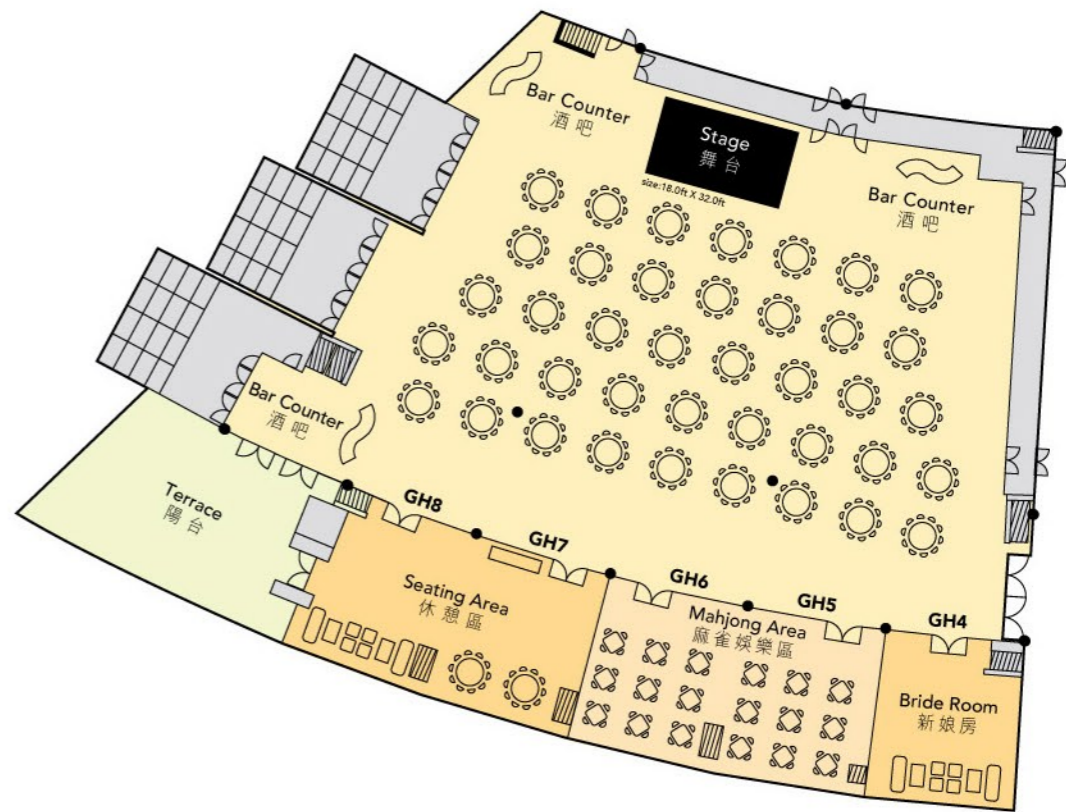
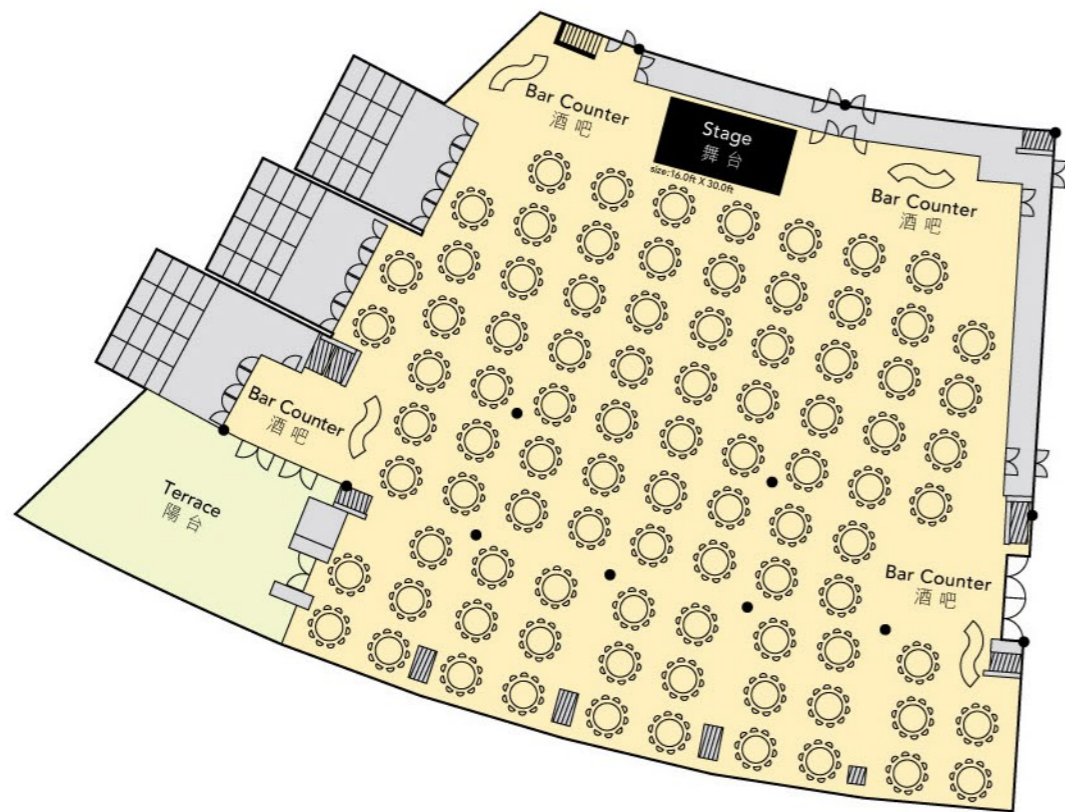
## Grand Hall 大禮堂



Level 樓	Location 場地	Floor Area 樓面面積			Capacity 容納人數									
		SQ Meters 平方公尺	SQ Feet 平方呎	Ceiling Height (Meters / Feet) 天花高度 (公尺/呎)	Chinese Banquet 中式宴會		Western Banquet 西式宴會				Cocktail 雞尾酒會	Classroom 教室	Theatre 劇院	U-shape U-型
					Seating Lunch / Dinner 午餐/晚餐		Seating Lunch / Dinner 午餐/晚餐		Buffet Seating Lunch / Dinner 自助餐午餐/自助餐晚餐					
Persons 人數	Round Table (12 seats) 圓桌 (12座位)	Persons 人數	Round Table (10 seats) 圓桌 (10座位)	Persons 人數	Round Table (10 seats) 圓桌 (10座位)	Persons 人數	Round Table (10 seats) 圓桌 (10座位)							
Level 4 4樓	Grand Hall 1 會議室 1	252	2,712	5.4/17.8	144	12	120	12	80	8	200	100	200	60
	Grand Hall 2 會議室 2	473	5,089	5.4/17.8	264	22	220	22	150	15	300	150	320	66
	Grand Hall 3 會議室 3	473	5,089	5.4/17.8	264	22	220	22	120	12	300	150	320	64
	Grand Hall 4 會議室 4	98.5	1,060	5.4/17.8	48	4	40	4	30	3	60	40	60	30
	Grand Hall 5 會議室 5	98.5	1,060	5.4/17.8	60	5	50	5	40	4	60	40	70	30
	Grand Hall 6 會議室 6	98.5	1,060	5.4/17.8	60	5	50	5	40	4	60	40	70	30
	Grand Hall 7 會議室 7	98.5	1,060	5.4/17.8	60	5	50	5	40	4	60	40	70	30
	Grand Hall 8 會議室 8	98.5	1,060	5.4/17.8	48	4	40	4	30	3	60	40	60	28
Level 4 4樓	Grand Hall 1+2 會議室 1+2	725	7,801	5.4/17.8	408	34	340	34	250	25	450	250	520	78
	Grand Hall 2+3 會議室 2+3	946	10,178	5.4/17.8	540	45	450	45	300	30	600	320	650	82
	Grand Hall 1+2+3 會議室 1+2+3	1,198	12,890	5.4/17.8	600	50	500	50	400	40	750	400	850	94
	Grand Hall 4+5+6+7+8 會議室 4+5+6+7+8	492.5	5,300	5.4/17.8	264	22	220	22	180	18	350	150	350	
	Grand Hall 會議室全層	1,960	21,090	5.4/17.8	1,080	90	900	90	750	75	1,800	500	1,800	
	Terrace 陽台	270	2,905	6.4/21.1							150			



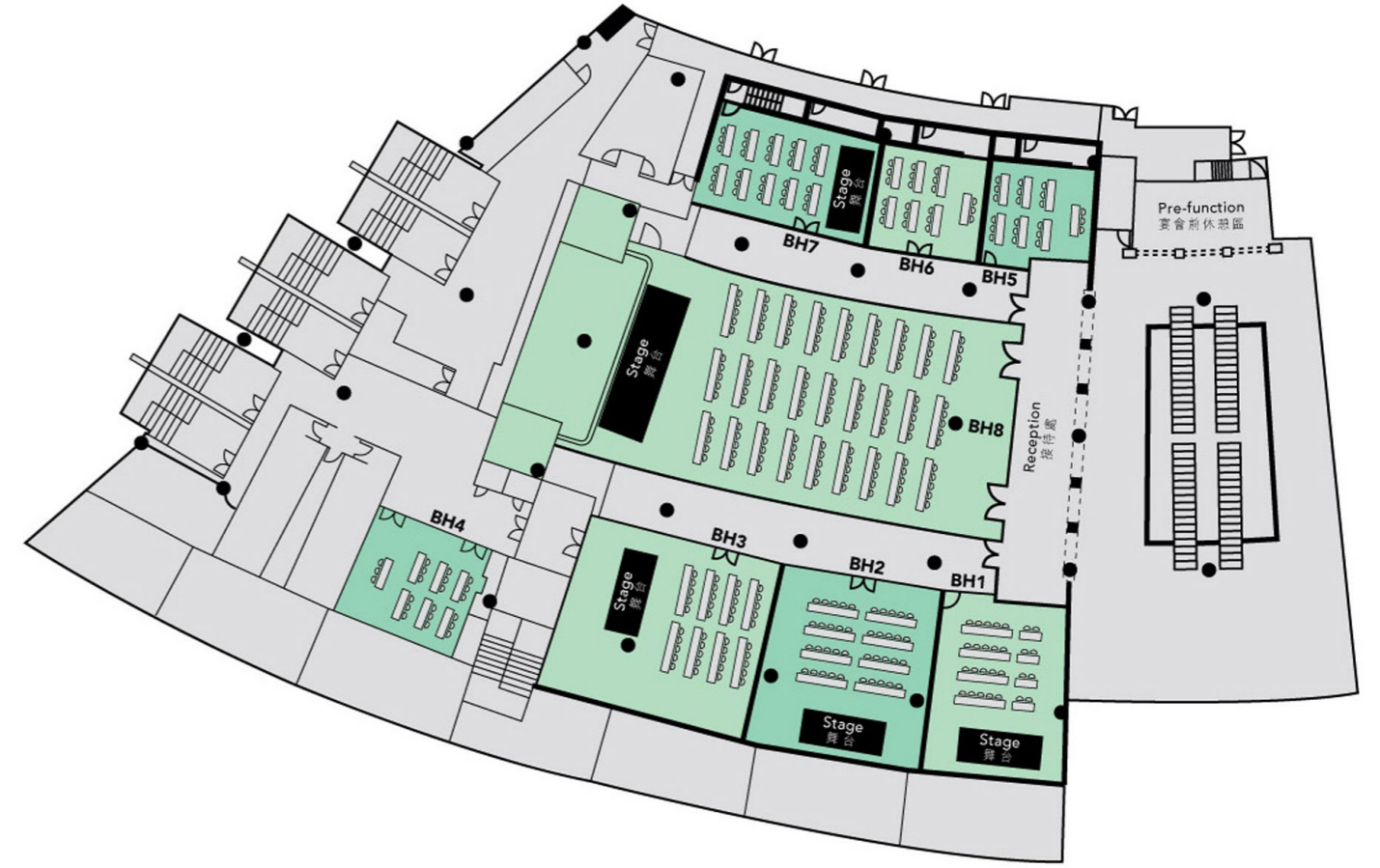
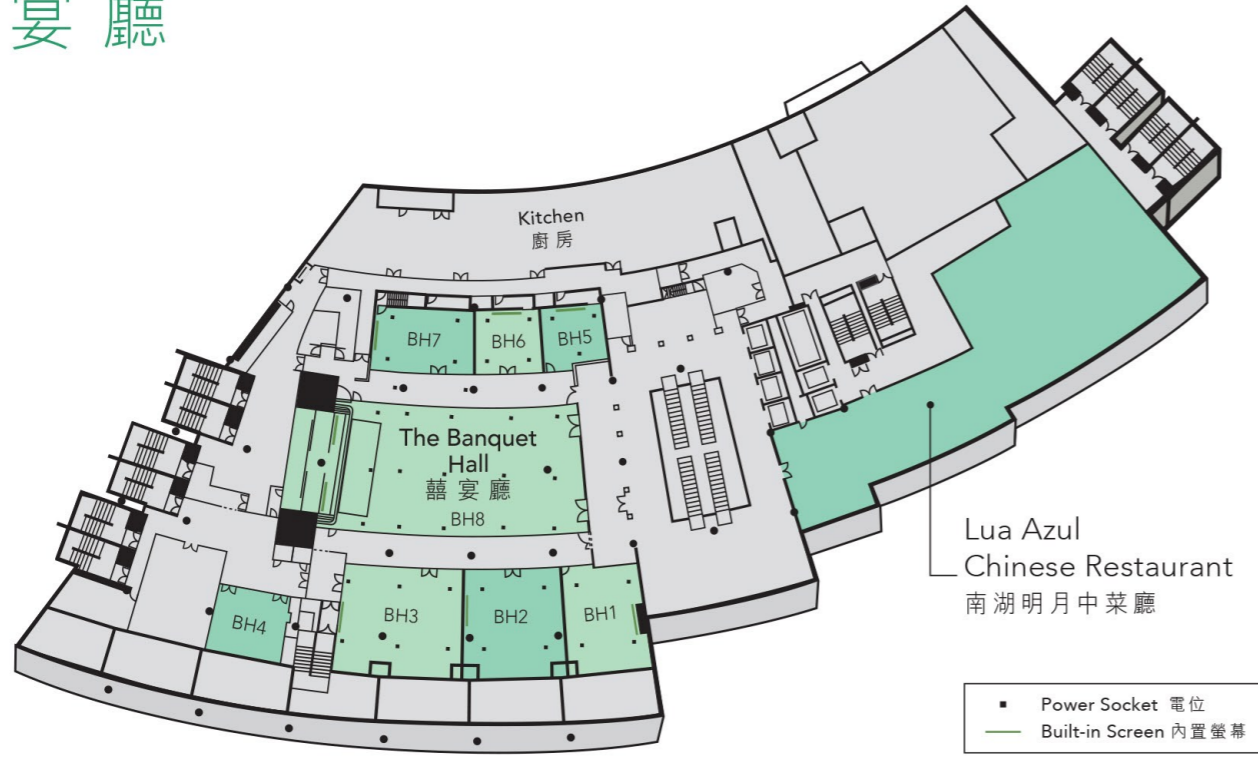
# Level 4



# Level 3

## The Banquet Hall

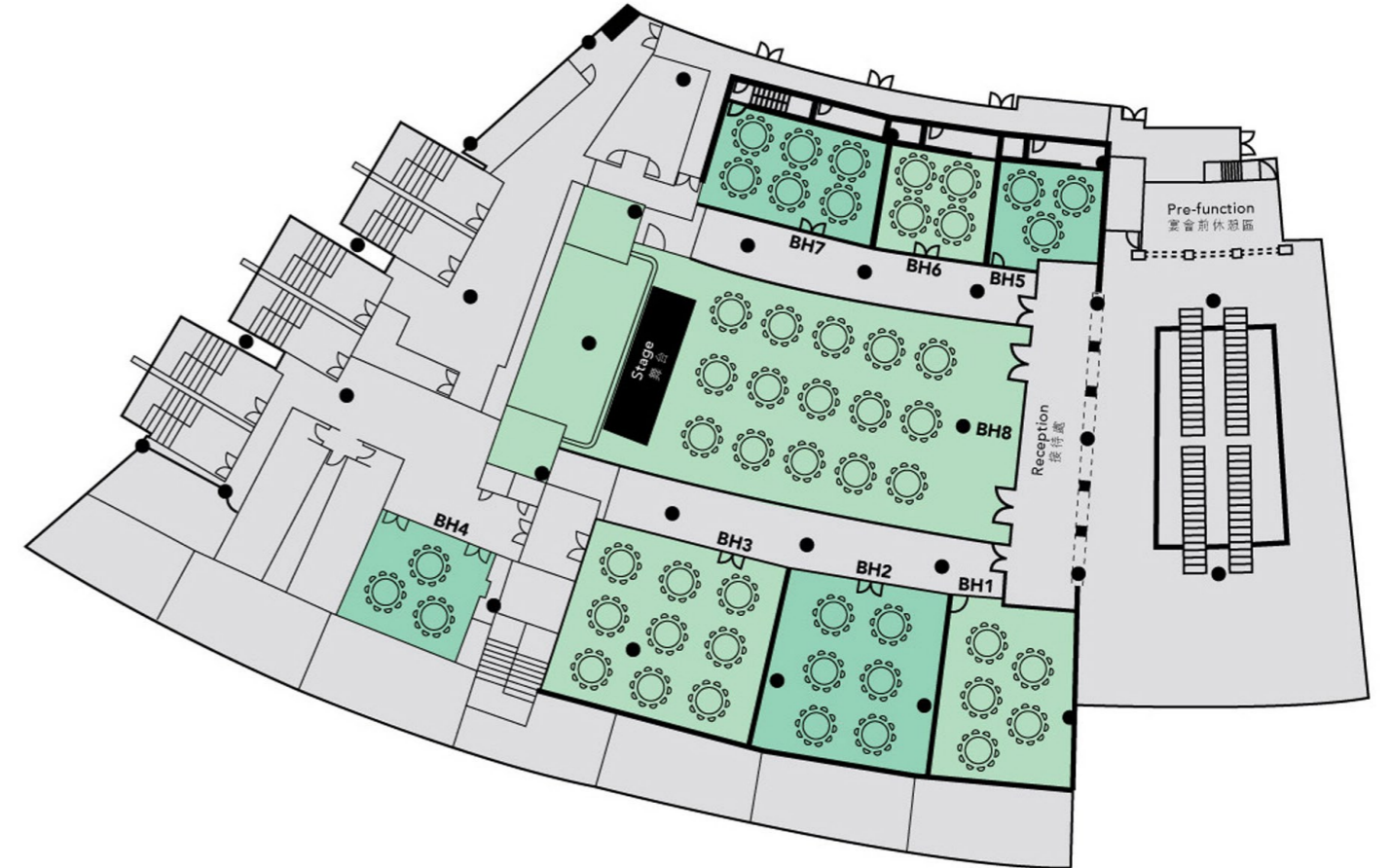
### 禧宴廳

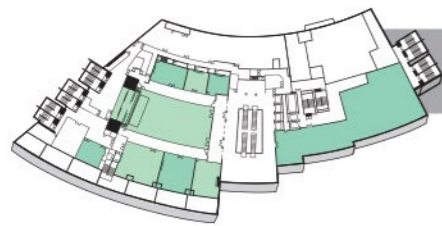


Level 樓	Location 場地	Floor Area 樓層面積			Capacity 容納人數										
		SQ Meters 平方公尺	SQ Feet 平方呎	Ceiling Height (Meters / Feet) 天花高度 (公尺/呎)	Chinese Banquet 中式宴會				Western Banquet 西式宴會			Cocktail 雞尾酒會	Classroom 教室	Theatre 劇院	U-shape U-型
					Seating Lunch / Dinner 午餐/晚餐		Seating Lunch / Dinner 午餐/晚餐		Buffet Seating Lunch / Dinner 自助餐午餐/自助餐晚餐						
Persons 人數	Round Table (12 seats) 圓桌 (12座位)	Persons 人數	Round Table (10 seats) 圓桌 (10座位)	Persons 人數	Round Table (10 seats) 圓桌 (10座位)	Persons 人數	Round Table (10 seats) 圓桌 (10座位)	Persons 人數	Round Table (10 seats) 圓桌 (10座位)	Persons 人數	Round Table (10 seats) 圓桌 (10座位)				
Level 3 3樓	Banquet Hall 1 禧宴廳 1	98	1,052	3.5/11.5	60	5	50	5	40	4	60	35	72	20	
	Banquet Hall 2 禧宴廳 2	115	1,238	3.5/11.5	72	6	60	6	40	4	65	40	80	25	
	Banquet Hall 3 禧宴廳 3	150	1,609	3.5/11.5	108	9	90	9	70	7	80	50	105	25	
	Banquet Hall 4 禧宴廳 4	56	605	3.5/11.5	36	3	30	3	30	3	30	20	48	20	
	Banquet Hall 5 禧宴廳 5	43	461	3.5/11.5	36	3	30	3	30	3	25	18	48	15	
	Banquet Hall 6 禧宴廳 6	47	505	3.5/11.5	36	3	30	3	30	3	25	18	48	15	
	Banquet Hall 7 禧宴廳 7	68	732	3.5/11.5	60	5	60	5	40	4	40	25	64	20	
	Banquet Hall 8 禧宴廳 8	361	3,884	5.2/17	180	15	150	15	140	14	220	130	280	50	

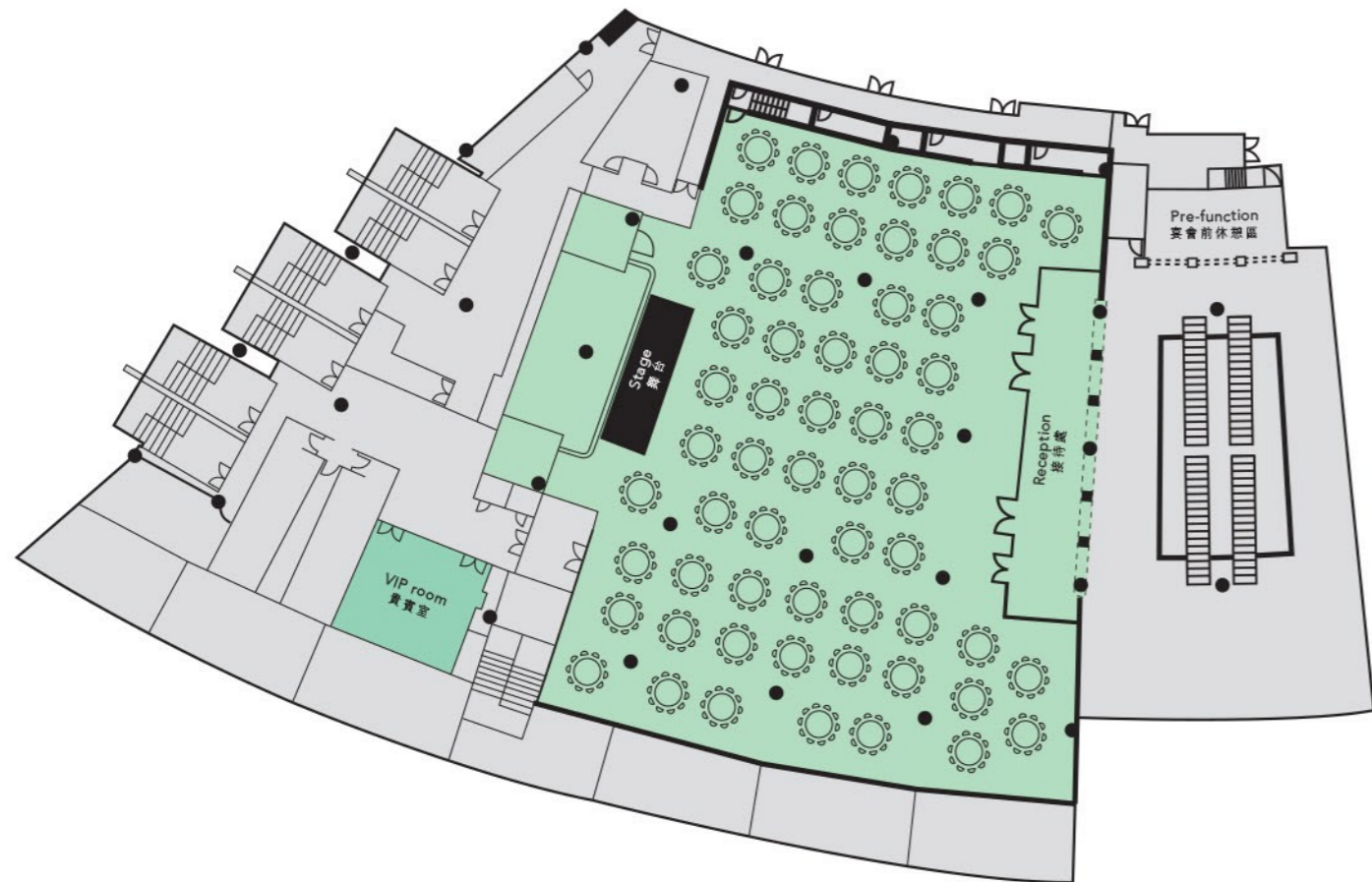
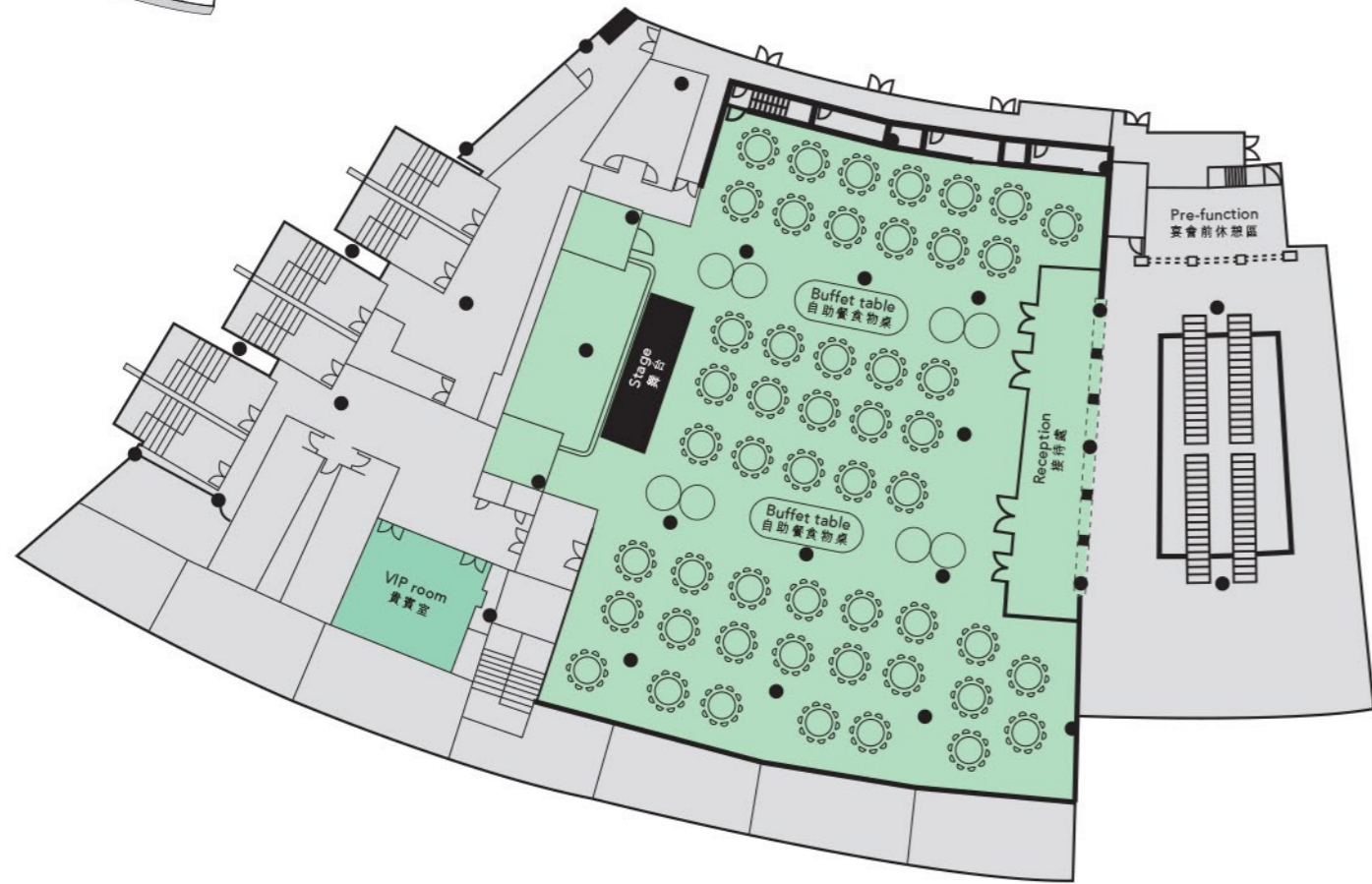
Level 3 3樓	Banquet Hall 1+2 禧宴廳 1+2	213	2,290	3.5/11.5	132	11	110	11	90	9	120	75	160	30
	Banquet Hall 2+3 禧宴廳 2+3	265	2,847	3.5/11.5	180	15	150	15	120	12	150	95	200	36
	Banquet Hall 1+2+3 禧宴廳 1+2+3	362	3,899	3.5/11.5	240	20	200	20	160	16	200	130	280	40
	Banquet Hall 5+6 禧宴廳 5+6	90	966	3.5/11.5	72	6	60	6	50	5	50	40	70	30
	Banquet Hall 6+7 禧宴廳 6+7	115	1,237	3.5/11.5	96	8	80	8	60	6	70	40	80	35
	Banquet Hall 5+6+7 禧宴廳 5+6+7	158	1,698	3.5/11.5	120	10	100	10	80	8	100	60	120	
	Banquet Hall 1+2+3+8 禧宴廳 1+2+3+8	723	7,783	3.5/11.5 5.2/17	480	40	400	40	320	32	420	250	520	
Banquet Hall 5+6+7+8 禧宴廳 5+6+7+8	519	5,582	3.5/11.5 5.2/17	384	32	320	32	250	25	320	200	400		

Level 3 3樓	Banquet Hall 禧宴廳	1,012	10,897	3.5/11.5 5.2/17	660	55	550	55	450	45	800	350	720	
---------------	---------------------	-------	--------	--------------------	-----	----	-----	----	-----	----	-----	-----	-----	--



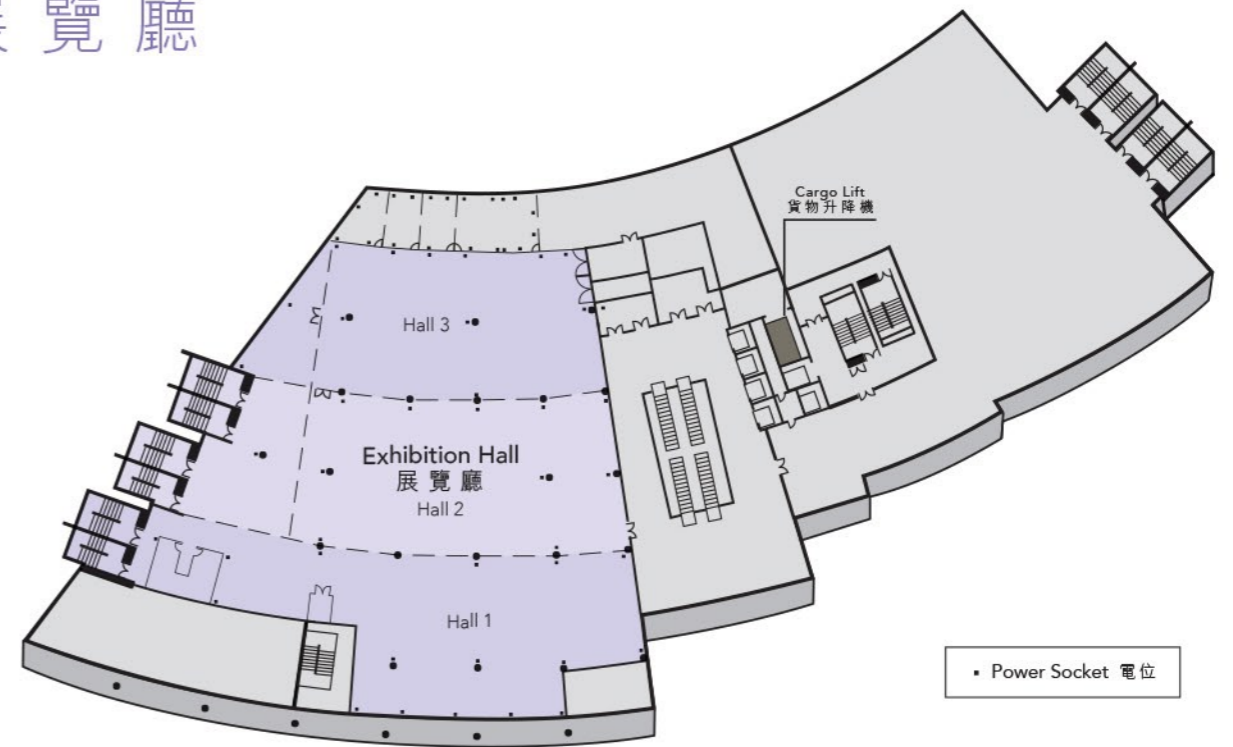


## Level 3

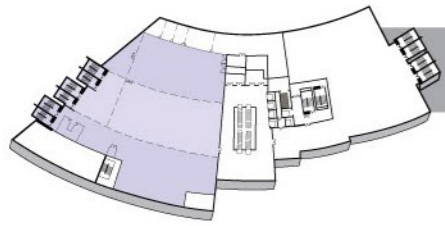


## Level 2

### Exhibition Hall 展覽廳



Level 樓	Location 場地	Floor Area 樓層面積			Capacity 容納人數									
		SQ Meters 平方公尺	SQ Feet 平方尺	Ceiling Height (Meters / Feet) 天花高度 (公尺/尺)	Chinese Banquet 中式宴會		Western Banquet 西式宴會				Cocktail 雞尾酒會	Classroom 教室	Theatre 劇院	U-shape U-型
					Seating Lunch / Dinner 午宴/晚宴		Seating Lunch / Dinner 午宴/晚宴		Buffet Seating Lunch / Dinner 自助餐午餐/自助餐晚餐					
Persons 人數	Round Table (12 seats) (12座位)	Persons 人數	Round Table (10 seats) (10座位)	Persons 人數	Round Table (10 seats) (10座位)	Persons 人數	Round Table (10 seats) (10座位)							
Level 2 2樓	Exhibition Hall 1 展覽廳 1	519	5,582	4.5/14.8	264	22	220	22	180	18	250	150	320	40
	Exhibition Hall 2 展覽廳 2	792	8,525	4.5/14.8	360	30	300	30	250	25	400	250	550	60
	Exhibition Hall 3 展覽廳 3	542	5,834	4.5/14.8	300	25	250	25	180	18	300	180	350	40
Level 2 2樓	Exhibition Hall 1+2 展覽廳 1+2	1,311	14,107	4.5/14.8	600	50	500	50	450	45	750	420	900	
	Exhibition Hall 2+3 展覽廳 2+3	1,334	14,359	4.5/14.8	720	60	600	60	450	45	800	450	920	
	Exhibition Hall 1+2+3 展覽廳 1+2+3	1,853	19,941	4.5/14.8	960	80	800	80	600	60	1,000	650	1,200	
	Exhibition Hall 1+2+3 展覽廳 1+2+3	1,853	19,941	4.5/14.8	Can accommodate up to a maximum of 100 booths of 3m per booth									



Level 2

